



GLOBAL  
BIODIVERSITY  
INFORMATION  
FACILITY

Presentation of the Node activity from

# ETI BioInformatics

W. Addink  
wouter@eti.uva.nl

# ETI Bioinformatics

Node activity



GLOBAL  
BIODIVERSITY  
INFORMATION  
FACILITY

ETI Bioinformatics –located in Amsterdam, the Netherlands, is an NGO established in 1990 by the **Dutch Government** and **UNESCO** to assist the taxonomic community in achieving worldwide access to quality biodiversity information for scientific, educational and other purposes.

1990...wait, that makes...

**20 Years ETI!**

(next week)





GLOBAL  
BIODIVERSITY  
INFORMATION  
FACILITY

# ETI Bioinformatics

Node activity

ETI = *Expert Center for Taxonomic Identification*,  
one of five Expert Centers founded in The Netherlands

- Biodiversity content editing and publication

## Linnaeus II species data management software

- Builder (in use by 1,600 taxonomist users)
- RunTime (112 CD-ROMS and DVD-ROMS published)
- WebPublisher (> 20 scientific and commercial sites)
- K2N Mobile (since 2008)

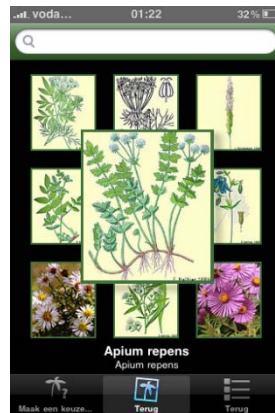
# ETI Bioinformatics

Node activity



GLOBAL  
BIODIVERSITY  
INFORMATION  
FACILITY

The **Information Division** maintains contacts with a global network of ETI partners having taxonomic expertise in a broad range of areas, creates and publishes quality taxonomic information in easy to use and innovative software productions like Linnaeus II, mobile identification keys and 3D systems.

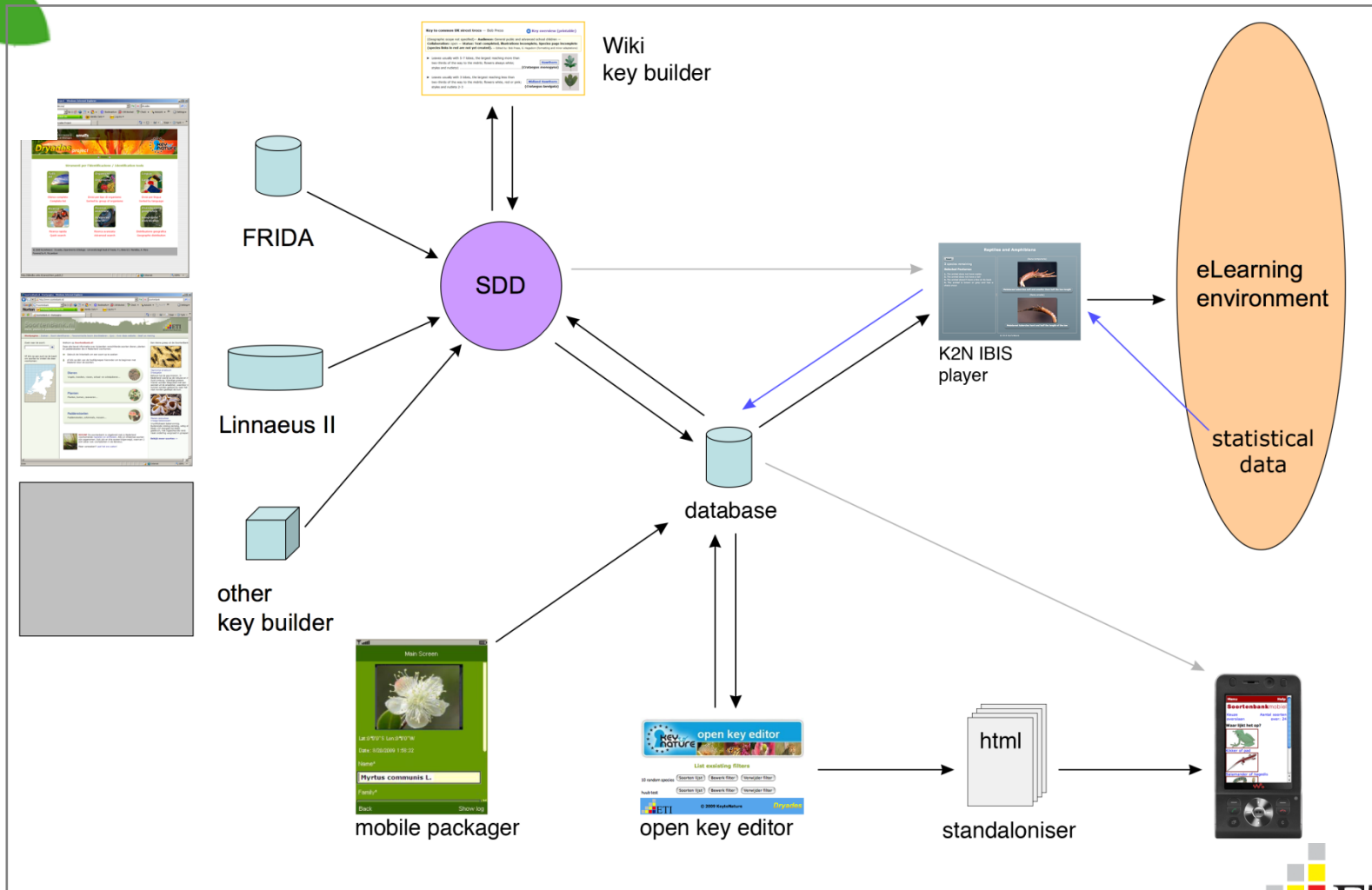


# ETI Bioinformatics

Node activity



GLOBAL  
BIODIVERSITY  
INFORMATION  
FACILITY



European GBIF Nodes Meeting, March 2010

# ETI Bioinformatics

Node activity



GLOBAL  
BIODIVERSITY  
INFORMATION  
FACILITY

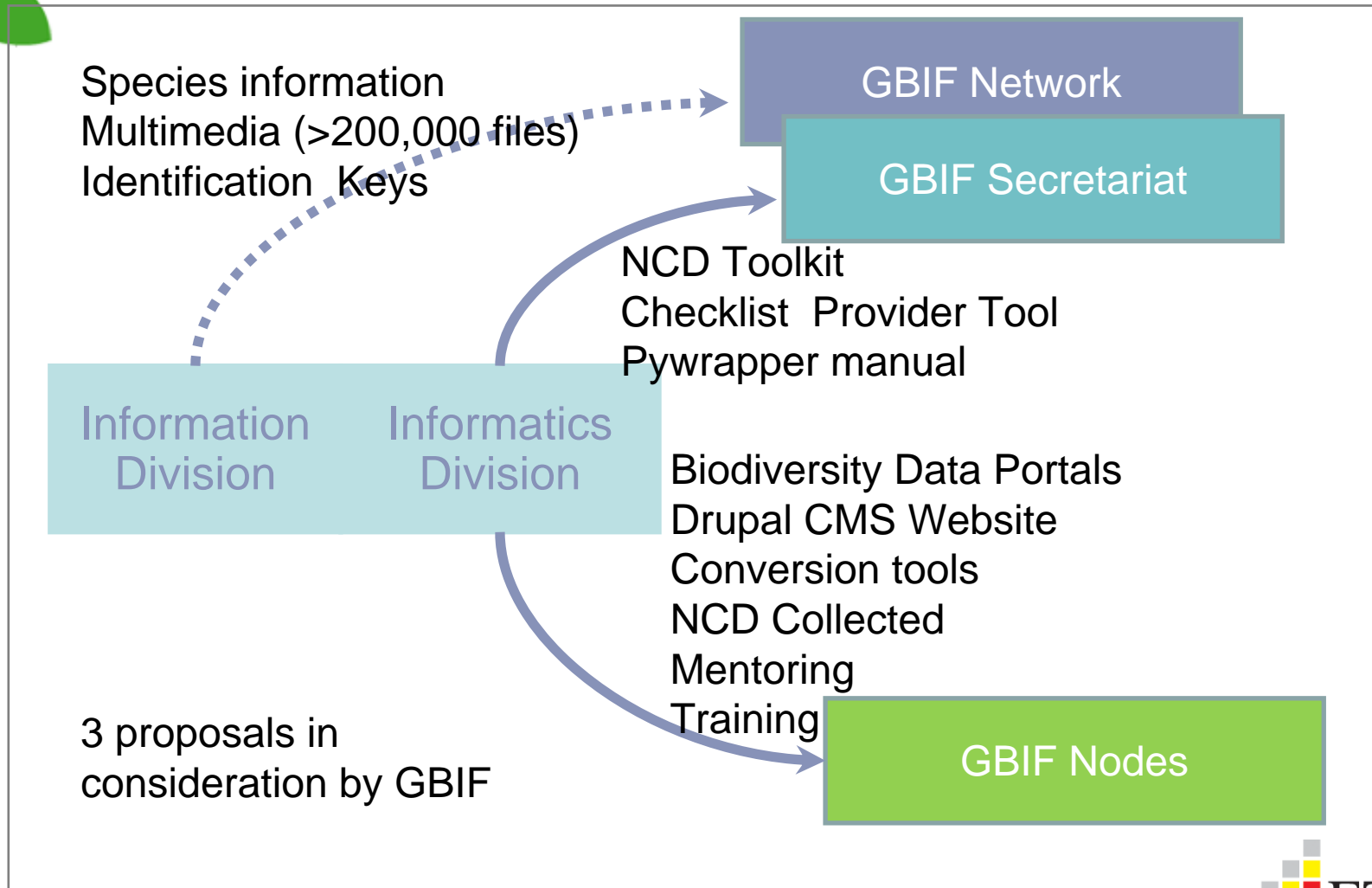
- The **Informatics Division** designs, develops, implements and hosts national and international ICT services and ICT solutions to support the accessibility and interoperability of digital scientific and educational information.
- **Biodiversity Portals** (aggregated biodiversity information from distributed sources with GIS, reporting, validation and analysis tools)
- Interoperability of scientific biological information and connection to **data networks**
- Conversion, standardization and validation of Biological data, **conversion and integration tools**
- CMS and community-driven **websites** for biodiversity projects, organizations and groups

# ETI Bioinformatics

Node activity



GLOBAL  
BIODIVERSITY  
INFORMATION  
FACILITY



European GBIF Nodes Meeting, March 2010



GLOBAL  
BIODIVERSITY  
INFORMATION  
FACILITY

# ETI BioInformatics

Node activity

Drupal...

Logged in as: [editor](#) (role: editor) | [Log out](#) | [My favorites](#) | [Nederlands](#) | [English](#)

## ncdCOLLECTED

nlbif

Home Collections Private Collections Institutions Persons

Search this site:  [Search >](#)

**Filter the results**

Collection type:

Known to contain types:

Kingdom coverage:

[Apply >](#)

Editor Information  
 Create content  
 Collection  
 Institution  
 Page  
 Person

Total number of records in English: 1074

(0 Persons)

You are here: [Home](#) > Collections

### Institute collections

1 2 3 4 5 6 7 8 [next >](#) [last >](#)

I = number of specimen, II = number of species, III = percentage databased

<a href="#">Collections</a> ▲	I	II	III	City
<b>Abelia</b> <a href="#">PlantenTuin Esveld</a>	7	100%		Boskoop
<b>Acari Types</b> <a href="#">National Museum of Natural History Naturalis</a>	1	643	100%	Leiden
<b>Aceraceae - Maple family</b> <a href="#">PlantenTuin Esveld</a>	600	100%		Boskoop
<b>Aceraceae - Sycamore or Maple family</b> <a href="#">Botanical Gardens University of Utrecht</a>	98			Doorn
<b>Aeonium [Crassulaceae, Sempervivens family]</b> <a href="#">Botanical Gardens University of Utrecht</a>	160	37		Utrecht
<b>Alpine plants</b> <a href="#">Botanical Gardens University of Utrecht</a>	2.376			Utrecht
<b>Amorphophallus [Araceae - Arum family]</b> <a href="#">Botanical Garden De Dreijen</a>	300	130		Wageningen
<b>Amphibians</b>				

European GBIF Nodes Meeting, March 2010

# ETI Bioinformatics

Node activity



GLOBAL  
BIODIVERSITY  
INFORMATION  
FACILITY

Drupal...

The screenshot shows a Drupal website interface for a species page. At the top, there is a search bar with the text "Zoek" and a navigation menu with links: Home, Forum, Administration, Settings, Add Content, Sign out, Language. Below the navigation is a secondary menu with icons for Introduction, Glossary, Taxa, Images, Classic Key, Matrix Key, Distribution, and Literature. The main content area is titled "Wildlife in Tanzania test" and shows a species page for "Acinonyx jubatus". The page includes a species description, a list of species, and an image upload interface. The image upload interface shows two images: "Original Image" and "New Image". The "Original Image" has dimensions (x=100, y=14, w=196, h=228) and the "New Image" has dimensions (x=268, y=38, w=527, h=614). The image upload interface also includes a "Done" button and a "Save" button. The species description text reads: "The *cheetah* is an a-typical member of the cat family (Felidae) that is unique in its speed, while lacking climbing abilities. Therefore it is placed in its own genus, Acinonyx. It is the fastest land animal, reaching speeds between 112 and 120 km/h (70 and 75 mph) in short bursts covering distances up to 460 m (1,500 ft), and has the ability to accelerate from 0 to 110 km/h (68 mph) in three seconds, faster than most supercars. Recent studies confirm the cheetah's status as fastest land animal." The footer of the website contains logos for ETI Bioinformatics, J.R.S. Biodiversity Foundation, Key Signature, EOL, EDIT, Scratchpads, Biodiversity Information Standards, GBIF, Creative Commons, and some rights reserved.

European GBIF Nodes Meeting, March 2010





GLOBAL  
BIODIVERSITY  
INFORMATION  
FACILITY

# ETI BioInformatics

Node activity

Drupal...

Nederlands • English

**nlbif** NETHERLANDS BIODIVERSITY INFORMATION FACILITY  
Dutch node of the Global Biodiversity Information Facility

2010

ABOUT NLBIF SERVICES INFORMATICS CHALLENGES

Home › Documents › Documents

**All Documents +**

Type	Size	Title	Author	Gepubliceerd
	91,9 KB	<a href="#">screenshot2.jpg</a>		14 Jan 2010
	270,9 KB	<a href="#">Piscaria 2</a>	NLBIF	08 Jan 2010
	270,9 KB	<a href="#">Piscaria 2-En</a>	NLBIF	08 Jan 2010

Filter by keyword

Document Categories

- Presentations
  - 2009
    - Test

European GBIF Nodes Meeting, March 2010

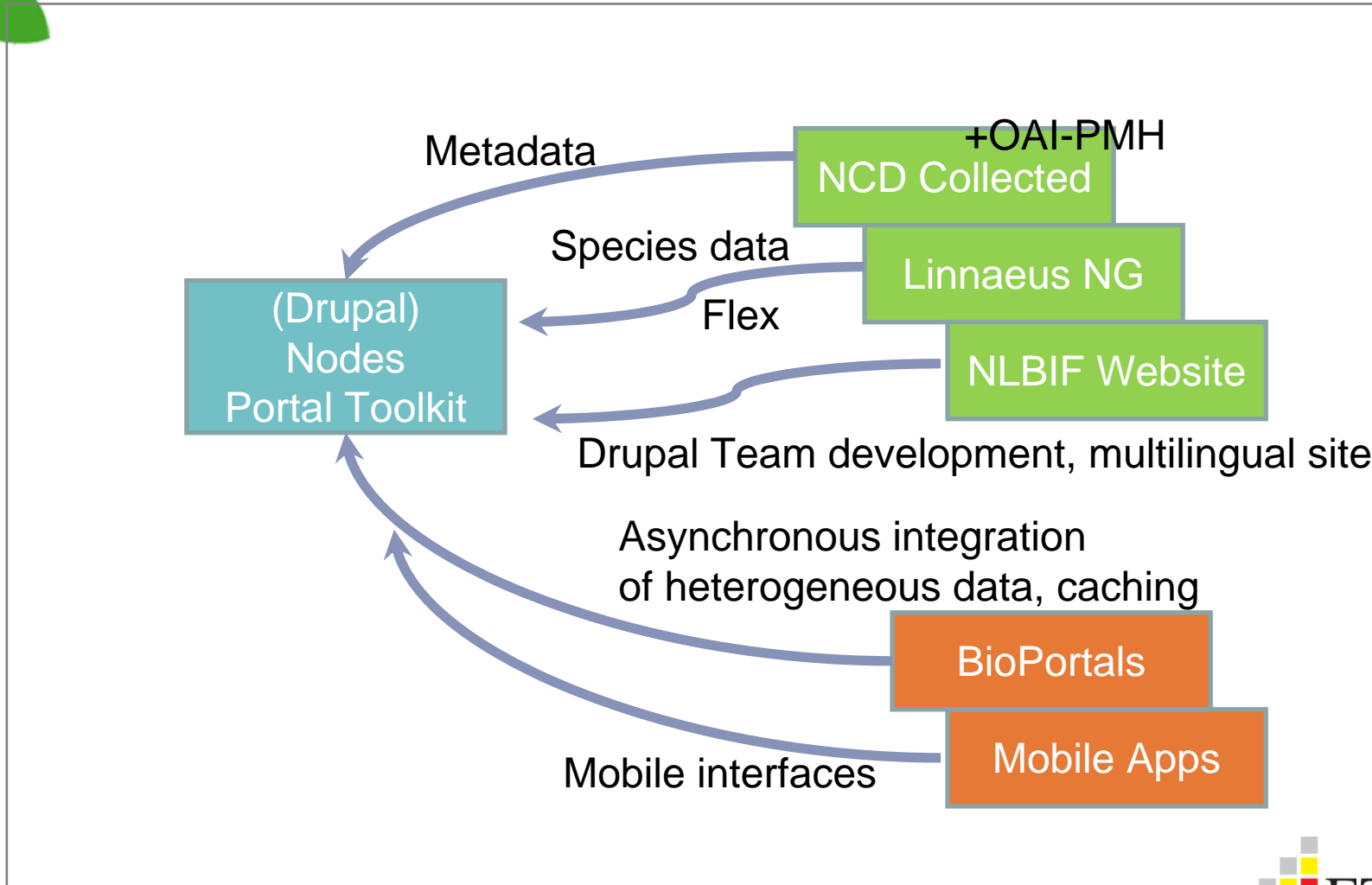


# ETI Bioinformatics

Node activity



GLOBAL  
BIODIVERSITY  
INFORMATION  
FACILITY



European GBIF Nodes Meeting, March 2010

# ETI Bioinformatics

Node activity



GLOBAL  
BIODIVERSITY  
INFORMATION  
FACILITY

## Is Drupal the right tool for NPT?

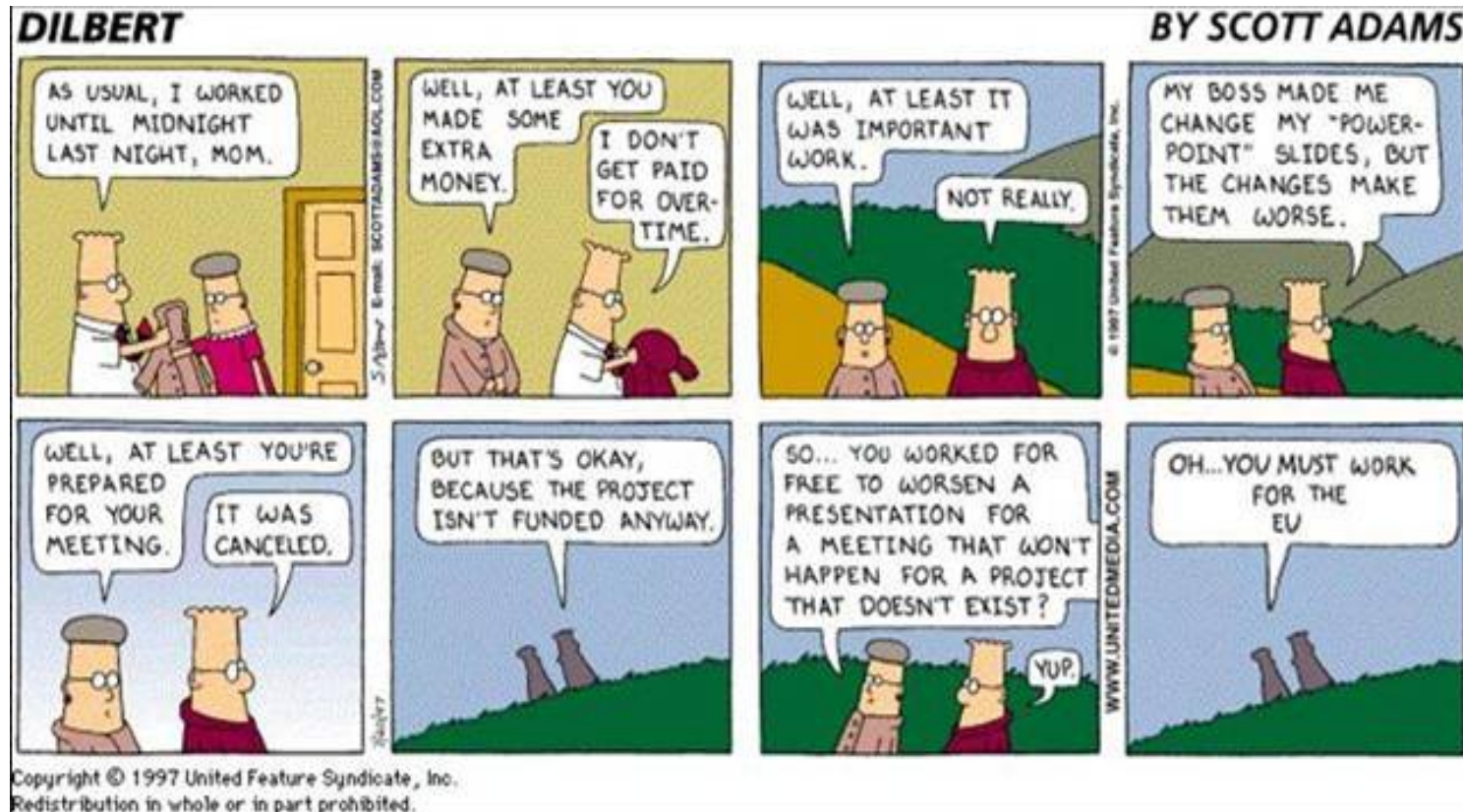
- Suitable for Scratchpads = suitable for NPT?
- Developers not always like developing in Drupal
- Maintainability and deployment issues
- Scalable enough?
- Collaborative development difficult
- A Drupal module is not a 'component'
- Packaging: installation profiles not mature
- Multilingual capabilities: with issues
- Webservices support: under construction

# ETI BioInformatics

Node activity



GLOBAL  
BIODIVERSITY  
INFORMATION  
FACILITY



European GBIF Nodes Meeting, March 2010